



Spares available up to end of 2017

List of components

Valid for all pumps in sizes: ACG/UCG 045/052/060/070; Rotor diameter and generation: K6/N6

With version codes: I } T } B } E } The version code is composed of the letters in the 4 columns

N } V } F } O } Also valid for pump options: A020, A101, A327

R } P } Example of pump designations

G } std: ACG 045N6 IVBP; option ACG 070N6 IVBO A101

Pos No	Denomination	Qty	Components included in Spare parts sets:							Note	Explanations:
			G011	G012	G050	G053	G054	G057	G070		
1010	Power rotor CCW-rot.	1	x					(x)			ACG: Pump with DIN flanges
1020	Power rotor CW-rot.	1		x				x			UCG: Pump with ANSI flanges
106	Balancing piston	1	x	x				x		5	
113	Shaft key	1	x	x				x			
120	Distance sleeve	1									A020: Surface-treated cast iron pump bodies.
122	Ball bearing	1				x	x	(x)		7	
124	Retaining ring	1				x	x	x			A101: Nonstandard rotation: CCW (counter clockwise). CW-rotation is standard)
124A	Support ring	1				x	x	x			
133	Dust protection ring	1				x	x	x			
201	Idler rotor CCW-rot.	2	x					(x)			A327: Pump with Tuning
202	Idler rotor CW-rot.	2		x				x			
359	Distance washer	1									G011: Rotor set CCW-rotation option
359A	Support ring	1				x	x	x			
401	Pump body	1									G012: Rotor set CW-rotation (std)
424	Sleeve	1								4	
424A	Washer	1								4	G050: Shaft seal
429	Spindle	1								4	G053: Minor kit (G050 + G057)
437	O-ring	1								4	
440	Return valve	1									G054: Major kit consisting of: G053 + G012 (G011) + 615
451	Screw	4/6									
453	Screw	4									
462	Plug	2								1	
462A	Sealing washer	2				x	x	x		1	G057: Joint kit
473	Grease nipple	1									G070: Valve element
473A	Grease nipple cover	1									
480	Valve housing	1								2	
5010	Front cover	1									
502	Tension pin	1								6	
502A	Plug	1								6	
506	Gasket	1				x	x	x			
509	Shaft seal	1		x		x	x				
514	Retaining ring	1				x	x	x			
520	Cover	1									
520A	Screw	4									
537	Plug	2									
537A	Sealing washer	2									
545	Tension pin	1								6	
551	Rear cover	1								3	
556	Gasket	1				x	x	x			
601	Valve cover	1							x	2	
602	Sealing washer	1				x	x	x	x	2	
605	O-ring	1				x	x	x	x	2	
606	Valve housing plug	1							x	2	
607	Sealing washer	1				x	x	x	x	2	
608	Valve spindle	1							x	2	
608A	Retaining ring	1							x	2	
612	Set screw	1							x	2	
614	Valve piston	1							x	2	
615	Valve spring	1					x		x	2	
631	Spring seat	1							x	2	

Notes:

- 1) Excluded in xxxG
- 2) Excluded in xxxE
- 3) Valid for xxxE
- 4) Valid for pump option A327
- 5) Included in item 1020 or 1010
- 6) Included in item 5010
- 7) A new spare part set G057 excluding ball bearing is introduced. Old set is available during a transition period. Part numbers, see Ordering code

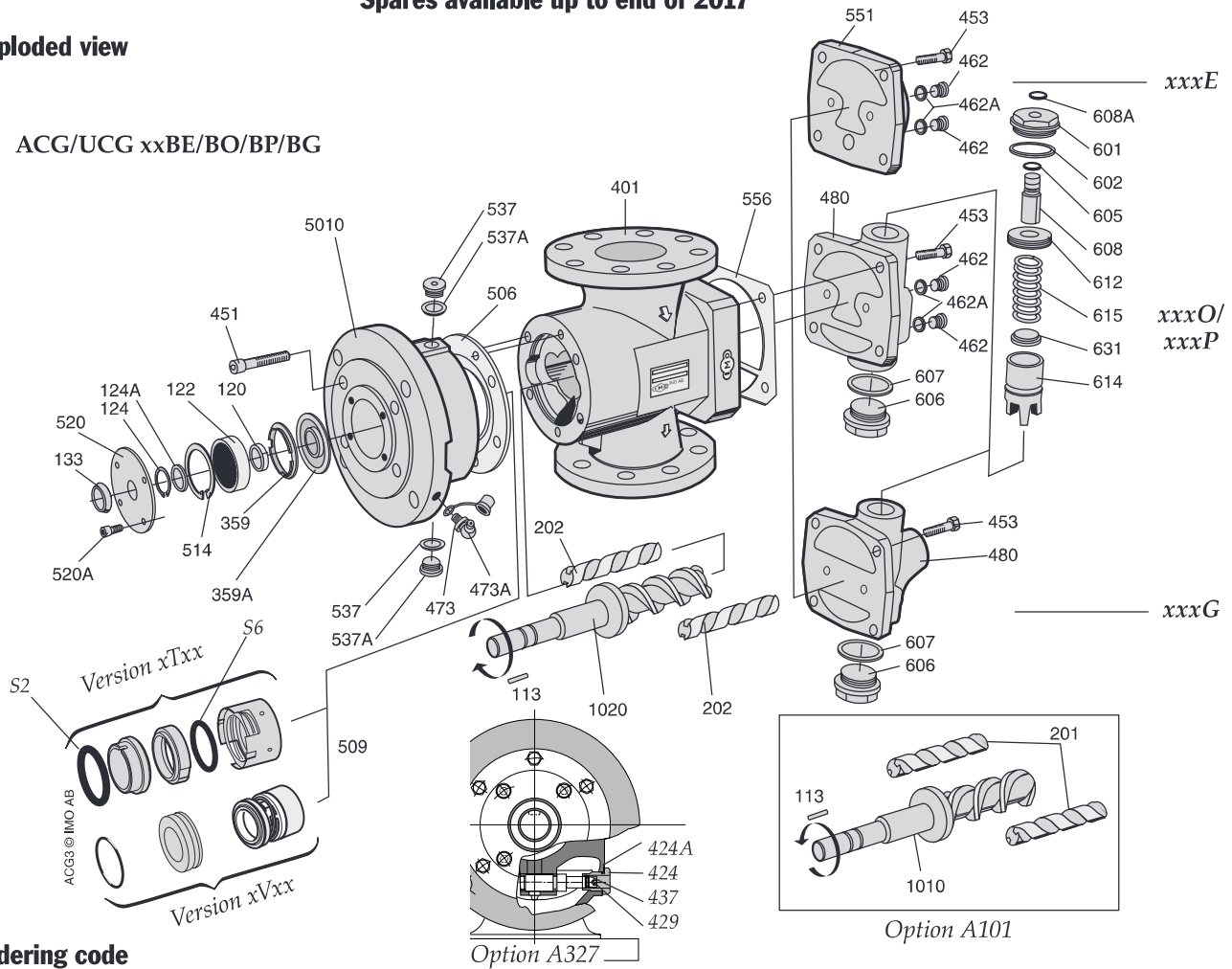
Please note:

ACG K6/N6 are replaced by K7/N7, see section C.

Spares available up to end of 2017

Exploded view

ACG/UCG xxBE/BO/BP/BG



Ordering code

Pos No	Spare parts (set)	Part numbers for pump size				
		045	052	060	070	
G011	Rotor set CCW-rot	K-lead	189641	189642	189643	189644
"	"	N-lead	186478	186486	186494	186502
G012	Rotor set CW-rot	K-lead	187542	187559	187567	187575
"	"	N-lead	178913	179507	179515	179523
G050	Shaft seal	xTxx	174094	174102	174110	174128
"	"	xVxx	190335	190336	190338	190340
G053	Minor kit	xTxx	189197	189199	189201	189203
"	"	xVxx	189196	189198	189200	189202
G054	Major kit=G012(G011)+G053+615					
G057	Joint kit incl ball bearing		179531	179549	179556	179564
"	excl ball bearing		191422	191423	191424	191425
G070	Valve element	xxxG/xxxP	190201	190201	190202	190202
"	"	xxxO	190200	190200	190203	190203
120	Distance sleeve		173112	172908	173575	173237
122	Ball bearing		173757	173765	173591	173260
133	Dust protection ring		173138	172981	173609	173278
359	Distance washer		173161	172916	173542	173245
480	Valve housing		obsolete	obsolete	obsolete	obsolete
5010	Front cover		obsolete	obsolete	obsolete	obsolete
502	Tension pin		027367	027367	027367	163956
537A	Sealing washer		010975	010975	010975	010975
608	Valve spindle		190002	190002	190002	190002
614	Valve piston		039768	039768	043083	043083
615	Valve spring	xxxG/xxxP	074294	074294	074302	074302
"	"	xxxO	157370	157370	157388	157388
631	Spring seat		039784	039784	043091	043091
S2	O-ring	xTxx	190806	190792	190807	191513

Recommendation:

For maintenance the following spare part sets are recommended:

Set: To be used:

G057 Joint kit

For dismantling of the pump

G053 Minor kit

For service

G054 Major kit

For repair after damage or greater wear.

Pumps for HFO application should be replaced by our ACG OptiLine, magnetic coupled pump. Pump duty required for correct selection.

Ordering example:

For IMO-pump ACG 045N6 IVBP, serial number 496890

Shaft seal
pos G050 p/n 190335

Valve spring
pos 615 p/n 074294