



**List of components**

Valid for all ACF/UCF pumps. Sizes, Rotor lead and Generation: 080/090/100 K5/N5 & 110/125 L5/N5.

With version codes: I } T } B } E }  
N } P }

Also valid for pump options: A020, A078, A101  
Example of pump designations std: ACF 080N5 ITBP;  
option: ACF 100K5 NTBP A101 - UCF 080N5 ITBE

Pos	Part Denomination	Qty	Included components in Spare part sets							Note
			G011	G012	G050	G053	G054	G057	G070	
1010	Complete power rotor (CCW-rot.)	1	x				x			
1020	Complete power rotor (CW-rot.)	1		x			x			
(103)	Ball	1	(x)	(x)						
(104)	Spring	1	(x)	(x)						
(105)	Hole screw	1	(x)	(x)						
(106)	Balancing piston	1	(x)	(x)						
113	Key	1	x	x						
122	Ball bearing	1				x	x	x		2,3
130	Support ring	1				x	x	x		2,3
131	Retaining ring	1				x	x	x		2,3
201	Idler rotor (CCW-rotation)	2	x							
202	Idler rotor (CW-rotation)	2		x			x			
401	Pump body	1								
4240	Tuning element	1								
(424)	Cover	1								
(424A)	Gasket	1				x	x	x		2,3
(425)	Screw	4								
(429)	Guiding screw	1								
(429A)	Tenison pin	1								
(430)	Piston 1 (Valid for sizes 100-125)	1								
(432)	Tenison pin (Valid for sizes 100-125)	1								
(437)	O-ring	1				x	x	x		2,3
451	Screw	4								
451A	Washer	4								
453	Screw	8								
455	Screw	4								
455A	Washer	4								
462	Plug	1								
462A	Washer	1				x	x	x		2,3
463	Plug	1								
463A	Washer	1				x	x	x		2,3
480	Valve housing	1								
501	Front cover	1								
506	O-ring	1				x	x	x		2,3
509	Mechanical seal	1				x	x	x		1,2
520	Compl. cover	1								
520A	O-ring	1				x	x	x		2,3
(520B)	Tension pin	1								
521	Screw	4								
521A	Washer	1								
(537)	Plug	1								
(537A)	Washer	1				x	x	x		2,3
556	Gasket	1				x	(x)	x		2,3
6000	Valve cartridge	1							x	
(6010)	Compl. valve cover	1							(x)	
(602)	Pin	1							(x)	
(603)	O-ring	1				x	x	x	(x)	2,3
(605)	O-ring	1				x	x	x	(x)	2,3
(608)	Valve spindle	1							(x)	
(609)	Washer	1							(x)	
(610)	Ball bearing	1				x			(x)	2,3
(612)	Regulating nut	1							(x)	
(614)	Valve piston	1							(x)	
(615)	Spring	1							(x)	
(622)	Nut	1							(x)	
(623)	Ball bearing	1				x			(x)	2,3

**Explanations:**

- ACF: Pump with DIN flanges
- UCF: Pump with ANSI flanges
- CW: Clockwise rotation
- CCW: Counter clockwise rotation
- G011: Rotor set CCW rotation
- G012: Rotorset CW rotation
- G050: Compl shaft seal
- G053: Minor kit (G050+G057)
- G054: Major kit
- G057: Joint kit
- G070: Valve element

**Notes:**

- 1) G050 xVxx is obsolete.  
G050 xTxx - when replacing xVxx with xTxx seal, remove and discard washer pos. 132.
- 2) G053 xVxx is obsolete.  
G053 xTxx - when replacing xVxx with xTxx seal, remove and discard washer pos. 132.
- 3) G057 xV/  
Txx - Joint Kit G057 is similar independent of change of Shaft Seal G050. If pump still has xVxx Seal - pos. 132 needs to be mounted.  
If pump has been upgraded with xTxx Seal, pos. 132 is no longer needed and can be disc-

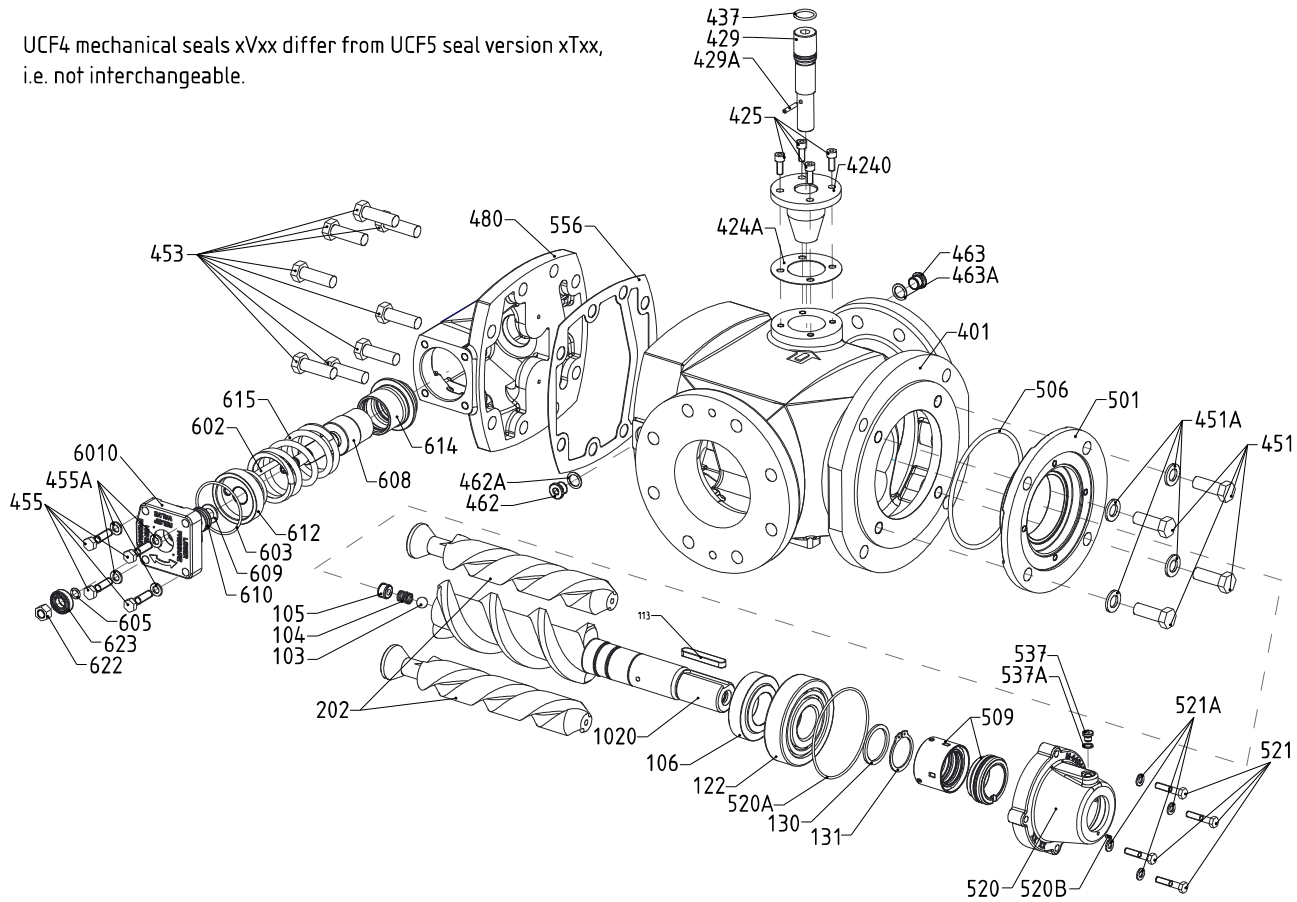
**ACF/UCF (K5/L5/N5) Low pressure pump**  
**Obsolete ACF/UCF (K4/L4/N4) See section D**



Spare parts book  
 September 2016

**Exploded view**

UCF4 mechanical seals xVxx differ from UCF5 seal version xTxx, i.e. not interchangeable.



**Ordering code**

Pos No	Spare Parts (set)		Part numbers for pump size					
			080	090	100	110	125	
G011	Rotor set	N-lead	192966	192968	192970	192972	192974	
		CCW	K-lead	192967	192969	192971	--	--
		L-lead	--	--	--	192973	192975	
G012	Rotor set	N-lead	192785	192958	192960	192962	192964	
		CW	K-lead	192786	192959	192961	--	--
		L-lead	--	--	--	192963	192965	
G050	Shaft seal	xTxx	194659	194659	194660	194660	194660	
G053	Minor kit	xTxx	194661	194662	194663	194664	194665	
G057	Joint kit		192990	193101	192991	193103	192992	
G070	Valve	xxxP	192553	192553	192554	192554	192555	

**Recommended Spare Parts Kits**

Every shutdown for service of a plant is costly. The time for repair should therefore be limited to a minimum which can be accomplished by keeping a spare pump. The changed pump can later be repaired at a suitable place and can then be used as a spare pump. For maintenance the following spare parts kits are recommended:

**Note:**

New coupling needed for sizes 80, 90, 100 and 125 when replacing ACF Gen. 4 pump with ACF Gen. 5 pump.

Kit	Contents	To be used for
G057	Gaskets, o-rings, ball bearing, etc	Dismantling of the pump
G053	G057 + Shaft seal G050	Normal scheduled inspection
G054	G053 + Complete rotor set	Repair after major breakdown or great wear

Mechanical seal valid for both ACE5 and