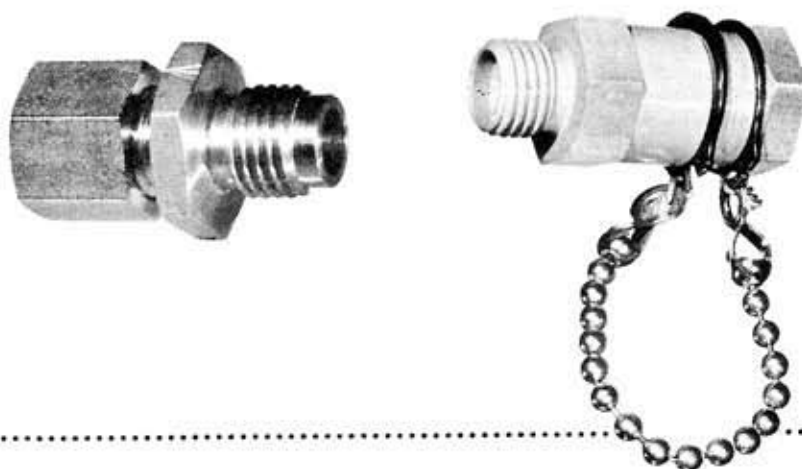


Wherever perfect sealing is required,
the proven reliability of Circle Seal precision valves
provides the one complete answer —
a combination of absolute leakproof sealing when closed
and virtually maintenance-free operation.



TYPICAL TECHNICAL CHARACTERISTICS

FILLER VALVES

Part Number	Service	Operating Temperature	Operating Pressure	Cracking Pressure	Service
P4-308	Air	-65 to 212°F	0-25 psi	.5 psi max.	1
P4-691	Air, Nitrogen	-100 to 450°F	0-5000 psi	8 psi max.	2

FILL AND BLEED VALVES

P20-228	Air, Nitrogen	-65 to 200°F	0-50 psi	—	3
P1-427	Air, Nitrogen	-65 to 165°F	0-4500 psi	—	4

1. Oral inflation.
2. Charging high pressure gas systems.
3. Filling and bleeding low pressure system.
4. Charging and bleeding high pressure system.

MATERIALS

Body — Aluminum, stainless steel.
Seals — Synthetic rubber (as required by service), Teflon.

SERVICE

Air, Helium, Oxygen, Nitrogen, Hydraulic Fluid, etc.

NOTES

Filler valves described above are special types designed to meet specific system requirements. Standard Circle Seal Check Valves, 200 Series, 2100 Series or 2600 Series provide the dead tight sealing required for filler valve requirements in most systems.

TYPICAL APPLICATIONS

Oral inflation of life jackets. Charging missile control or pressurizing systems.
Charging airborne oxygen systems.

CIRCLE SEAL

CONTROLS

FILLER VALVES Fill & Bleed Valves

TYPE OF VALVE

A filler valve is a normally closed check valve which opens when charging or filling pressure is applied, closes and seals dead tight when system is charged or filled.

Fill and bleed valves are normally closed valves which are opened by insertion of the filling connection, close automatically when it is withdrawn.

PURPOSE

To permit rapid filling of container or system without the necessity of opening and closing a manual type valve. Dead tight sealing is essential to prevent loss of charging pressure.

OPERATING CHARACTERISTICS

Dead tight sealing when closed.

Very low opening pressure — where required.

Manual locking of poppet closed is not required.

Suitable for long term storage.

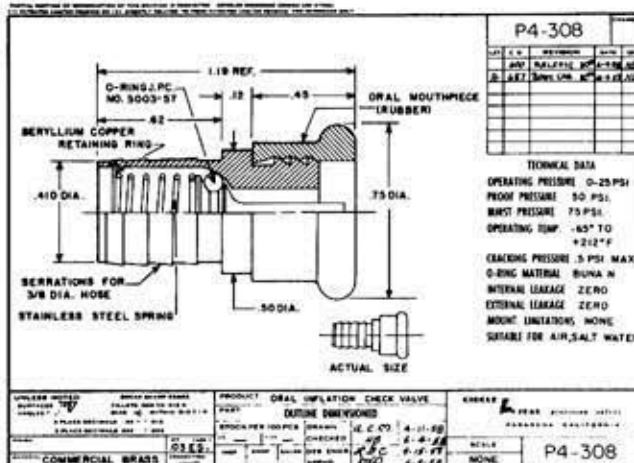
Complete operating reliability.

 **CIRCLE SEAL CONTROLS, INC.**

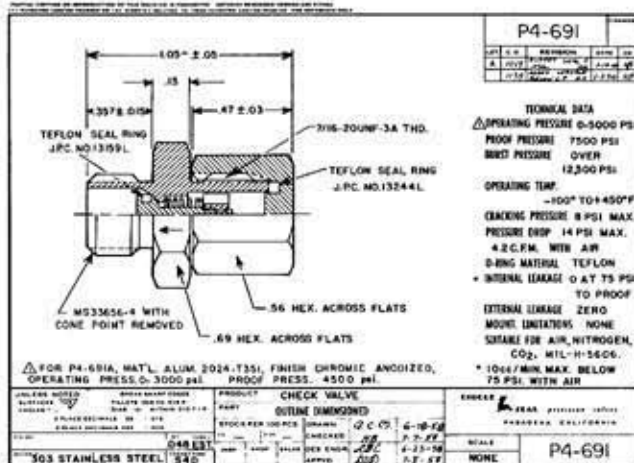
A CIRCOR International company
2301 WARDLOW CIRCLE
CORONA, CALIFORNIA 92880

TEL: (951) 270-6200 FAX: (951) 270-6201

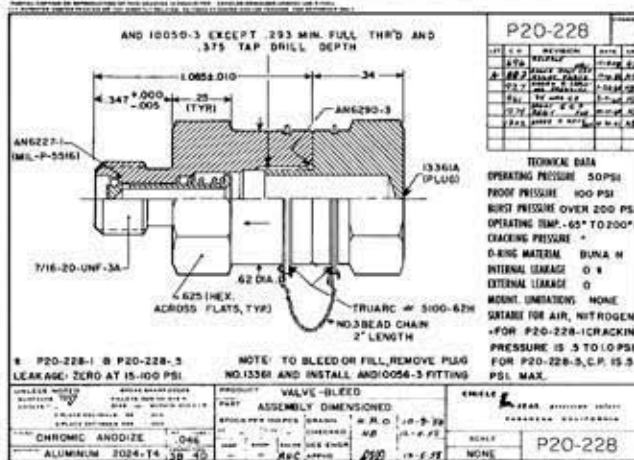
Oral inflation of inflatable life vest.



Charging missile system pressurizing spheres.



Pressurizing and bleeding small pressurized electronic control boxes on missile systems.



Filling missile control pressure supply reservoirs.

