

Charact. curves acc. **DIN EN ISO 9906** Class 2
Admissible minimum capacity 10 % * Q(opt) at continuous operation
Remarks:

Item:
Pos.No:

Created by
GR-B, -

Date
2012-12-11

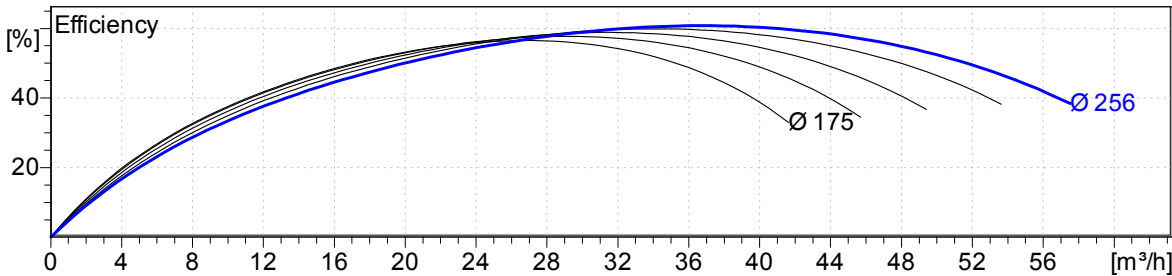
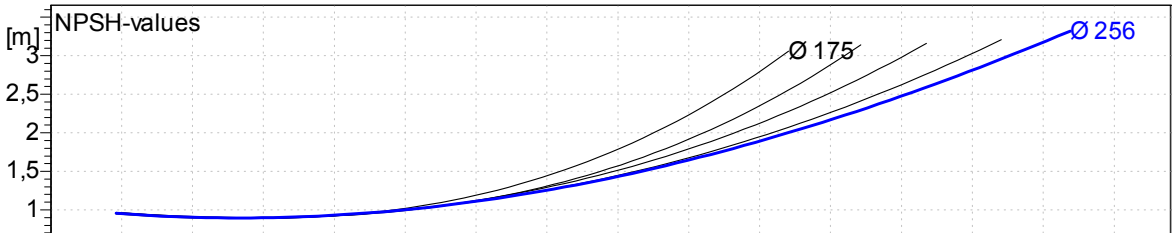
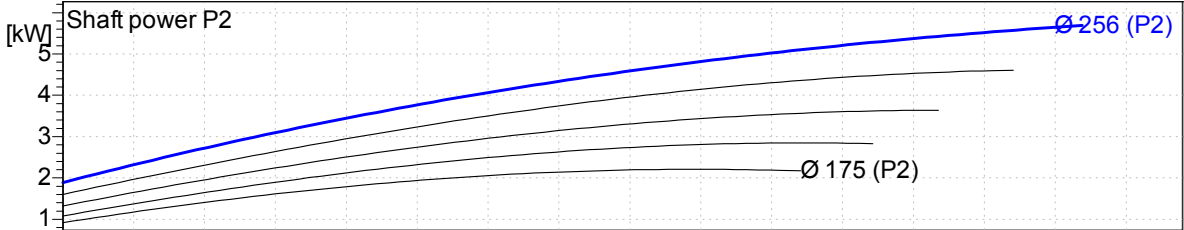
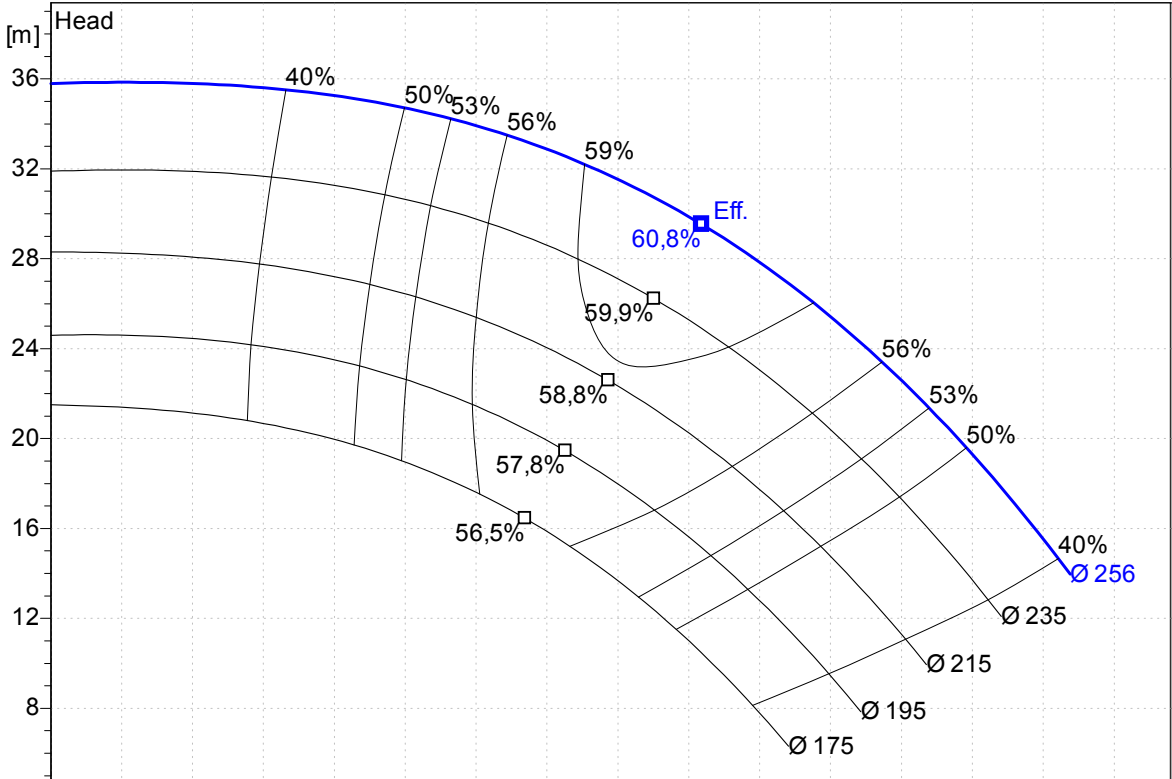
Power data referred to:

Water, pure

Q	H	P	Vis	Temp	Density	rated Torque
1)			1,0 mm ² /s	20,0 °C	1,00 kg/dm ³	
2)						

Speed
1450 1/min

NPSH-value without safety margins



Flow

Charact. curves acc. **DIN EN ISO 9906** Class 2
Admissible minimum capacity 10 % * Q(opt) at continuous operation
Remarks:

Item:
Pos.No:

Created by
GR-B, -

Date
2012-12-11

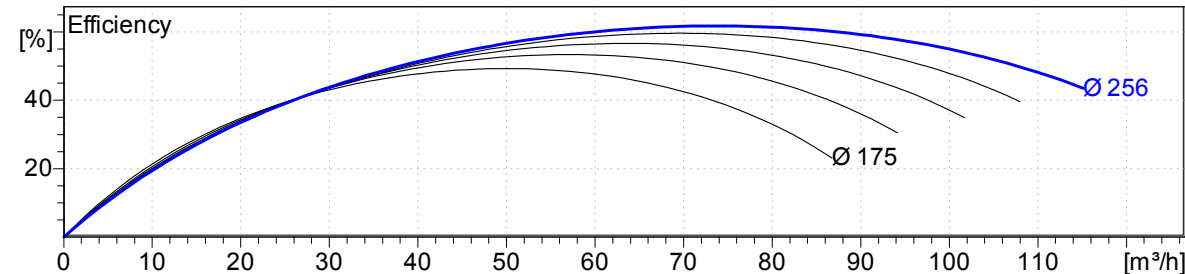
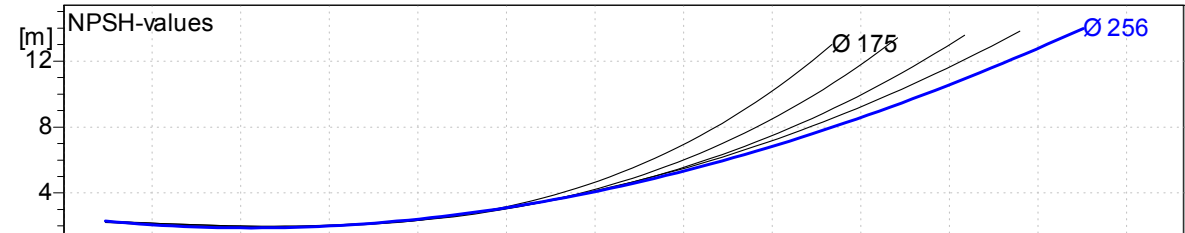
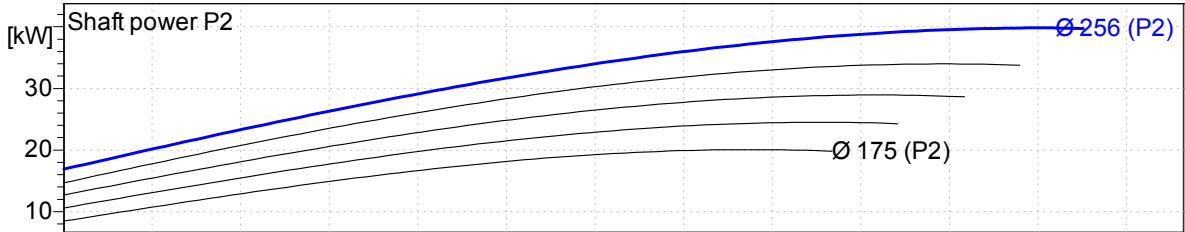
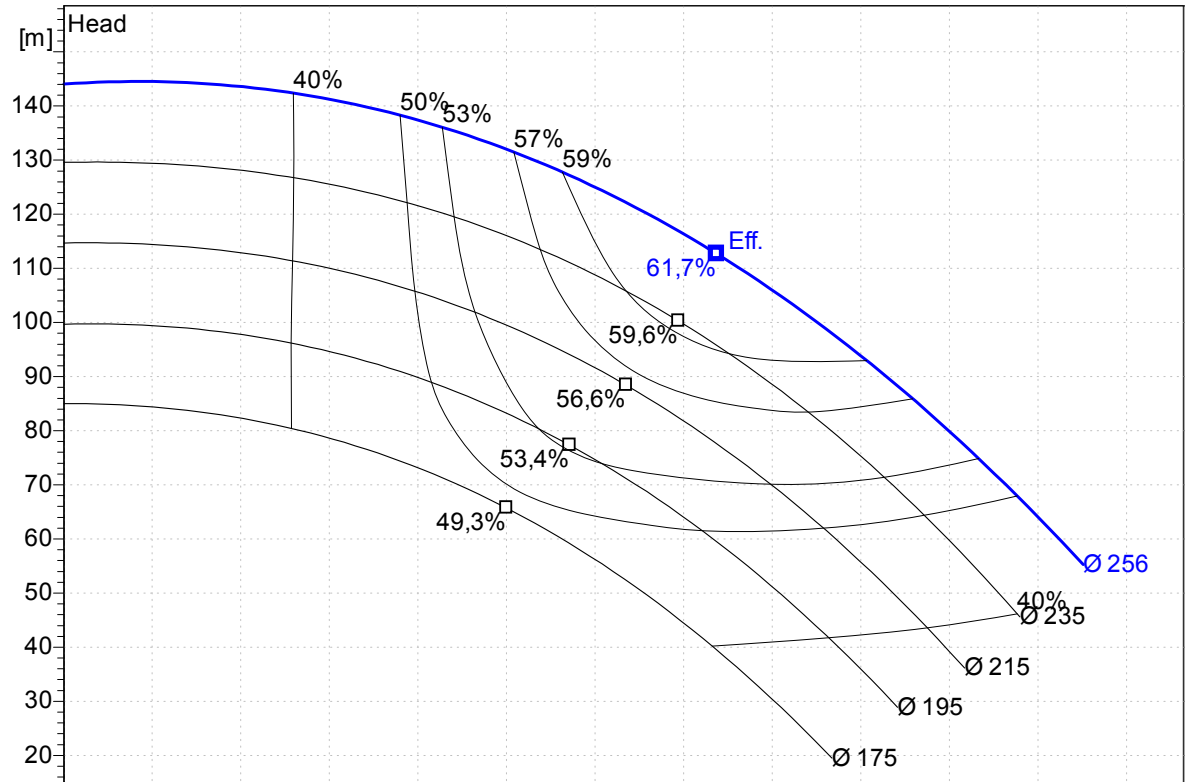
Power data referred to:

Water, pure

Q	H	P	Vis	Temp	Density	rated Torque
1)			1,0 mm ² /s	20,0 °C	1,00 kg/dm ³	
2)						

Speed
2900 1/min

NPSH-value without safety margins



Flow