



# RS SERIES

Relief Valve



YOUR CREATIVE ENGINEERING PARTNER

# RS SERIES

## Relief Valve for Non-Oxygen Applications

RS Series Relief Valve is a compact relief valve offering customers a wide range of set pressure at a stable set point.

It has a proven track record across various industries worldwide. RS Valves are also available with either direct or banjo bolt mounting.

### HIGHLIGHTS

- > Compact Design
- > Higher Pressure Options
- > Wide Set Pressure Ranges
- > Banjo and Non-Banjo versions available

### IDEAL USES

- > Over pressure protection for gas systems



PED Category IV  
**APPROVED**

Pressure up to  
**330**  
barg  
(4,785 psig)

Temperature  
Range  
**-20°C to**  
**+70°C**

## FEATURES AND SPECIFICATIONS

### Inlet Port – Direct Mounting Type

- > G3/8 female (other ports such as NPT are available)

### Inlet Port – Banjo Bolt Type

- > G3/8 male



## OTHER OPTIONS

### > PORTS

Alternative port configurations can be supplied.

### > OPERATION

Wire locked variants can be supplied.

### > MATERIALS

Suitable combinations of materials can be supplied for various applications.

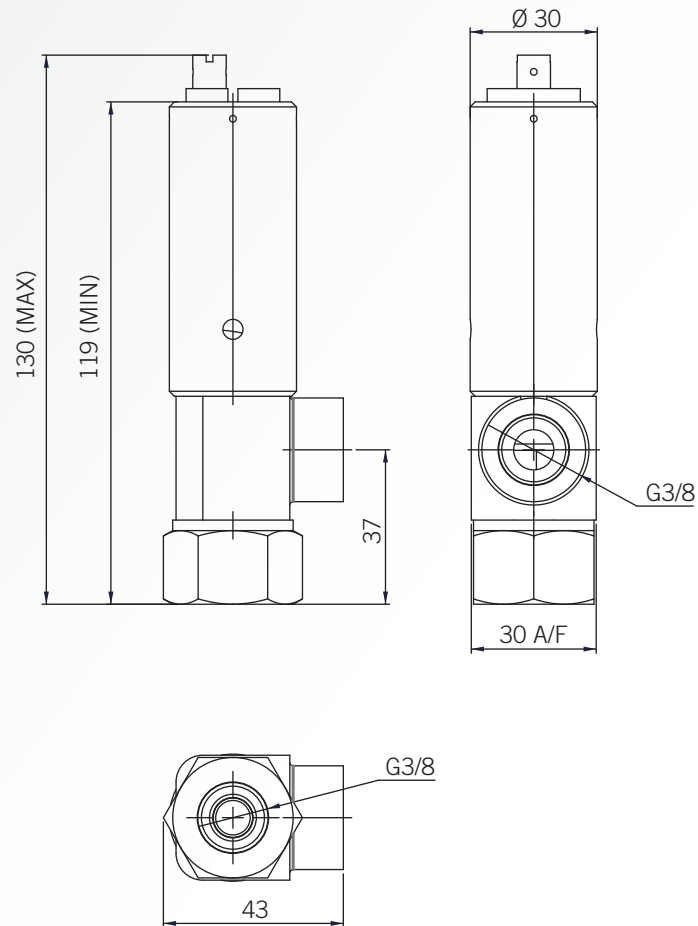
### > CERTIFICATION

Variants are available for ATEX service or as a "Safety Accessory" to PED Category IV.

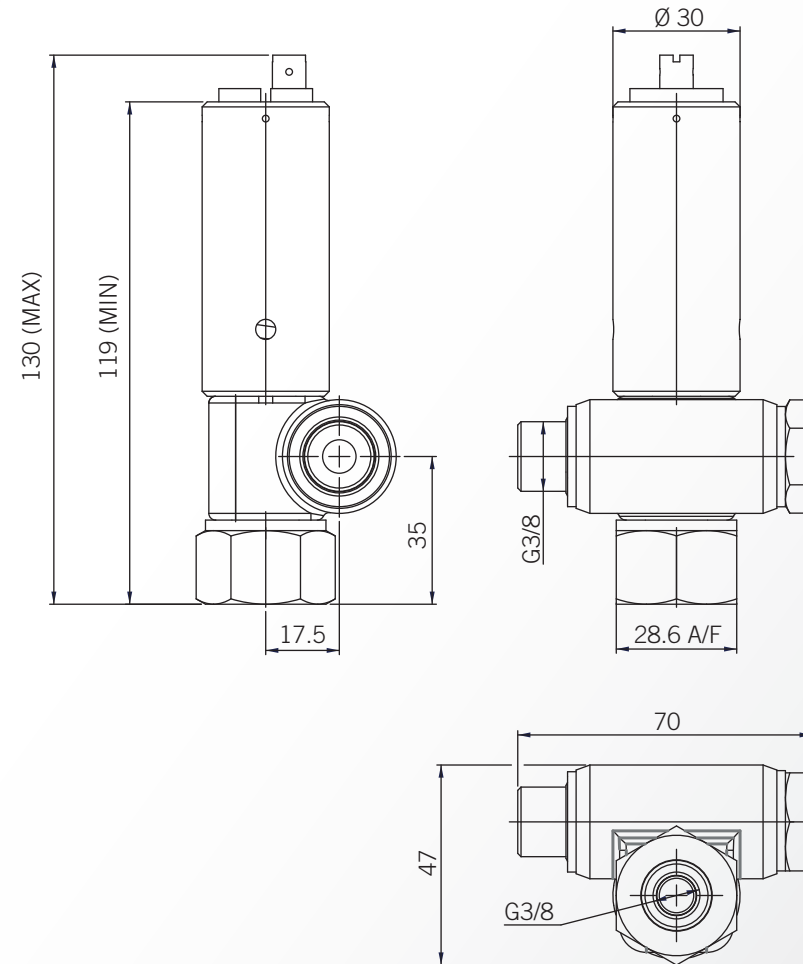
FEATURE	RS9	RS11	RS12	RS23
Set Pressure Ranges (barg & psig)	3.5 to 7 (50 to 100 psig)	17 to 34.5 (250 to 500 psig)	120 to 172 (1750 to 2500 psig)	248 to 310 (3600 to 4500 psig)
	7 to 17 (100 to 250 psig)	34.5 to 69 (500 to 1000 psig)	172 to 248 (2500 to 3600 psig)	
		69 to 120 (1000 to 1750 psig)		
Temperature Range	-20°C to +70°C			
Weight	0.68kg	0.76kg	0.78kg	0.9kg
Orifice Size (mm)	9.5mm			
Sealing Materials	PTFE and NBR			
Leakage	Bubble Tight			
Standard Materials	<b>Body:</b> Nickel Aluminium Bronze or Brass <b>Valve/Piston:</b> Stainless Steel or Phosphor Bronze <b>Seals:</b> Nitrile			

## INSTALLATION DIMENSIONS - RS9, RS11, RS12

RS9 , RS11 , RS12

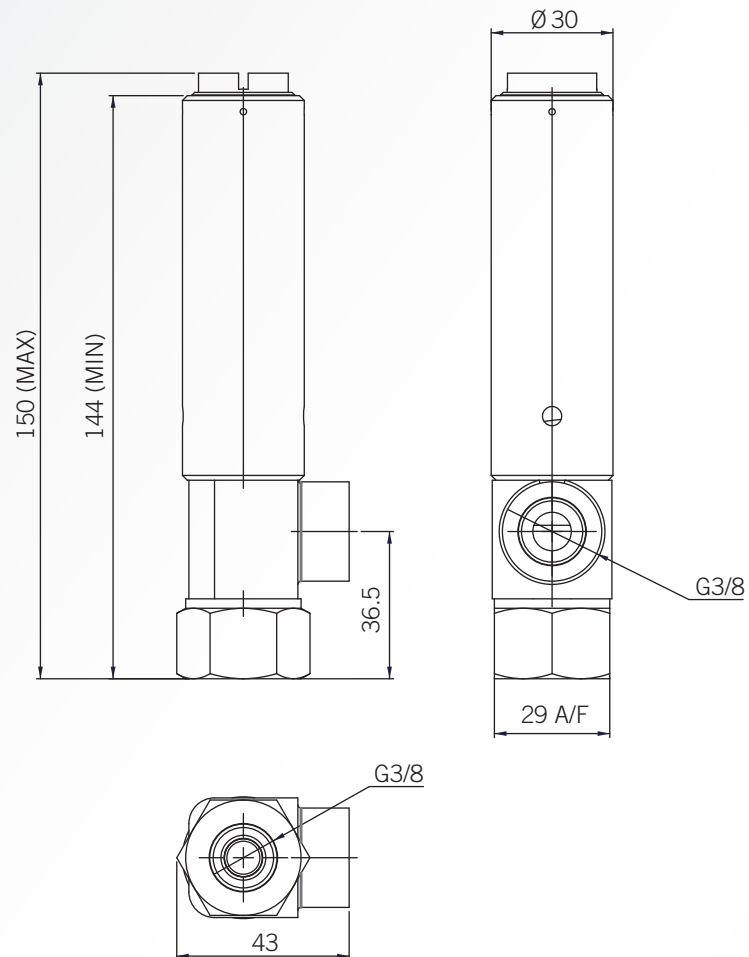


RS9 , RS11 , RS12 BANJO VERSION

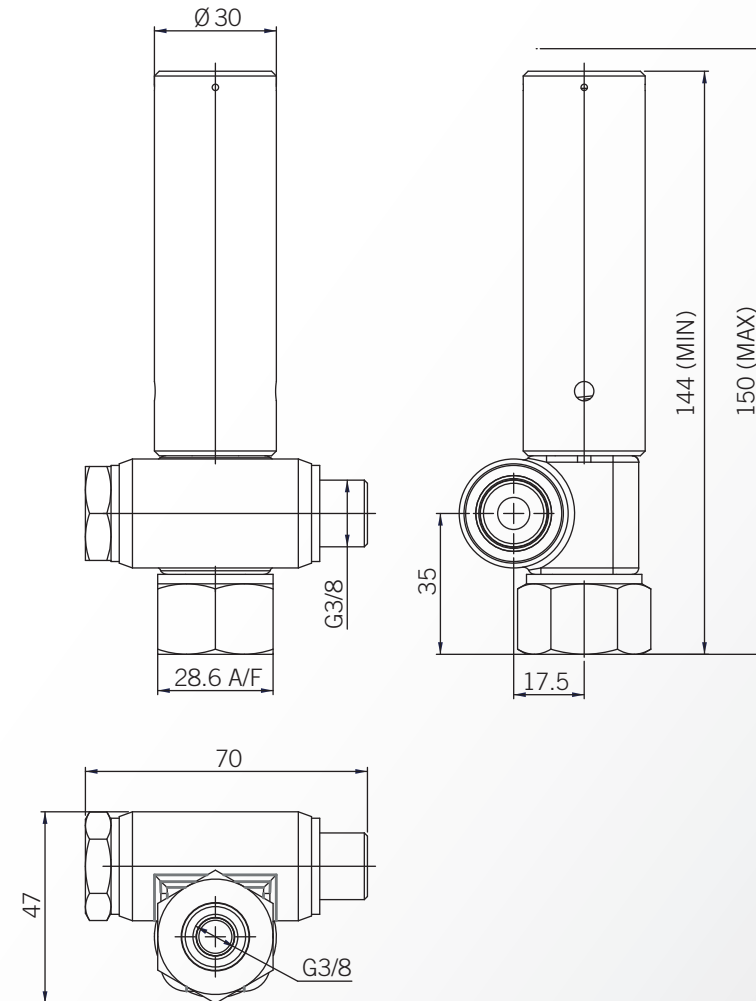


## INSTALLATION DIMENSIONS - RS23

RS23



RS23 BANJO VERSION



## ORDERING INFORMATION

### PRODUCT ORDERING INFORMATION

When placing an enquiry please advise the following:

- > Relief set pressure
- > Fluid type
- > Operating temperature range
- > Certification and QA requirements

RS9	ORDERING CODE	MOUNT TYPE	CONNECTION	SET PRESSURE RANGE
RS9 MK1 Relief Valve	NB18992-1	Banjo	G3/8 Male Inlet x G3/8 female Outlet	3.4 to 7.0 barg
RS9 MK1 Relief Valve	NB18992-2	Banjo	G3/8 Male Inlet x G3/8 female Outlet	7.0 to 17.2 barg
RS9 Relief Valve 101-250 psig	NC19263-2	Direct	G3/8 female inlet and outlet	6.9 to 17.2 barg
RS9 Relief Valve 50-100 psig	NC19263-1	Direct	G3/8 female inlet and outlet	3.4 to 6.9 barg

RS11	ORDERING CODE	MOUNT TYPE	CONNECTION	SET PRESSURE RANGE
RS11 Relief Valve	NC12730-1	Direct	G3/8 female inlet and outlet	17.2 to 34.5 barg
RS11 Relief Valve	NC12730-2	Direct	G3/8 female inlet and outlet	34.5 to 69.0 barg
RS11 Relief Valve	NC12730-3	Direct	G3/8 female inlet and outlet	69.0 to 120.7 barg
RS11 MK1 Relief Valve	NB14440-1	Banjo	G3/8 Male Inlet x G3/8 female Outlet	17.2 to 34.5 barg
RS11 MK1 Relief Valve	NB14440-2	Banjo	G3/8 Male Inlet x G3/8 female Outlet	34.5 to 72.0 barg
RS11 MK1 Relief Valve	NB14440-3	Banjo	G3/8 Male Inlet x G3/8 female Outlet	70 to 121.0 barg

RS12	ORDERING CODE	MOUNT TYPE	CONNECTION	SET PRESSURE RANGE
RS12 MK1 Relief Valve	NB14427-1	Banjo	G3/8 Male Inlet x G3/8 female Outlet	121.0 to 172.0 barg
RS12 MK1 Relief Valve	NB14427-2	Banjo	G3/8 Male Inlet x G3/8 female Outlet	172.0 to 248.0 barg
RS12 Relief Valve	NB12677-1	Direct	G3/8 female inlet and outlet	121.0 to 172.0 barg
RS12 Relief Valve	NB12677-2	Direct	G3/8 female inlet and outlet	172.0 to 248.0 barg

RS23	ORDERING CODE	MOUNT TYPE	CONNECTION	SET PRESSURE RANGE
RS23 Relief Valve (Ped4)	ND25296	Direct	G3/8 female inlet and outlet	248.0 to 310.0 barg
RS23 MK1 Relief Valve	NC25709	Banjo	G3/8 Male Inlet x G3/8 female Outlet	248.0 to 310.0 barg
RS23 MK1 Relief Valve	NCAS25709/101	Banjo	G3/8 Male Inlet x G3/8 female Outlet	330 barg