



2815 SERIES

Spring Loaded Regulator, 3/8"
(DN10)



YOUR CREATIVE ENGINEERING PARTNER

2815 SERIES

Spring Loaded Regulator, 3/8"

The 2815 Series is a High Pressure Spring Loaded Pressure Regulator which provides accurate pressure control for low flow and static pressure test applications. The 2815 Series regulator is suitable for gas applications up to 465 barg and liquid applications up to 690 barg respectively. For gas applications, an internal filter provides protection against low levels of contamination. An F Series Filter can be fitted upstream for additional protection. RS or RVA Series Relief Valves can be matched to the Series 2815 regulator to protect downstream systems.



HIGHLIGHTS

- > Accurate pressure control
- > Low operating torque
- > NACE compliant variants
- > Self-venting variants

IDEAL USES

- > Pressure test applications
- > Piloting applications
- > Low flow pressure reduction system

+70°C

Maximum Inlet
for Gas Applications

465

barg
(6,750 psig)

Maximum Inlet for
Liquid Applications

690

barg
(10,000 psig)

Cv
0.08

FEATURES AND SPECIFICATIONS

1. Thrust Bearing

- > Non rising stem arrangement and large control knob combine to offer a low operating torque and ease of positioning

2. Closed Spring Chamber

- > To avoid atmospheric corrosion and contamination ingress

3. Main Spring

- > Low rate main spring for accuracy

4. Piston Sensing Elements

- > For outlet pressures above 58 barg

5. Self – Venting (Captured vent)

6. Diaphragm Sensing Element

- > For low pressure applications for greater sensitivity and accuracy

7. Unbalanced Valve Stem

- > For positive gas shut off

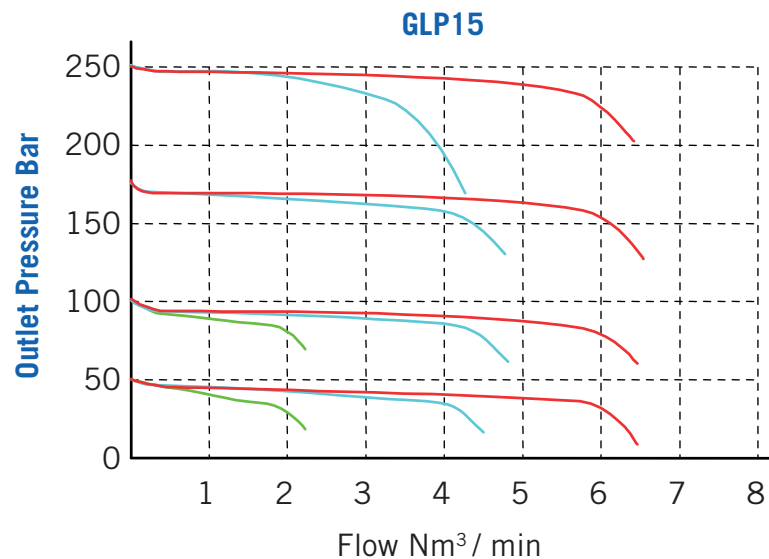
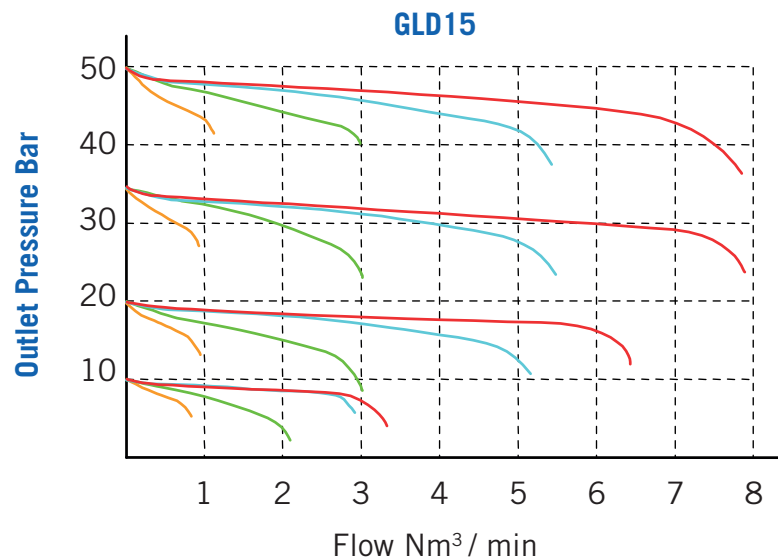
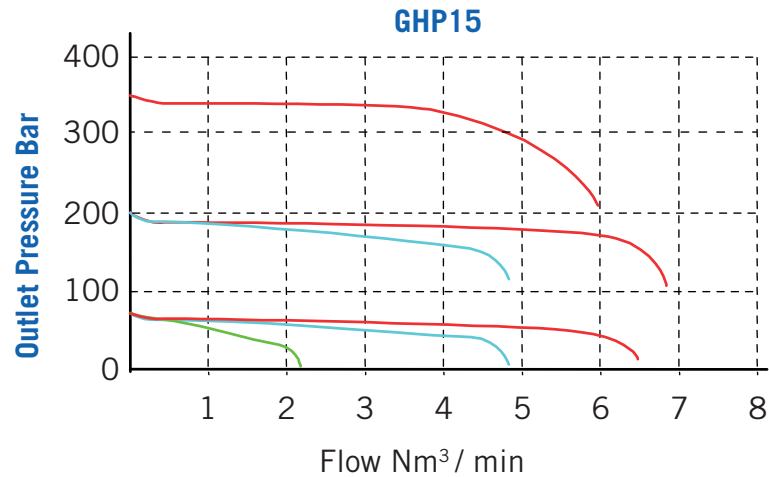


PRODUCT SPECIFICATION DATA

	GLD15	GLP15	GHP15	GXP15
Function	Pressure Control			
Media	Gases and Hydraulic Fluid			
Inlet Rating Gas	465 barg (6,750 psig)			
Inlet Rating Liquid	690 barg (10,000 psig)			
Outlet Ranges	1.5 – 58 barg (25 – 850 psig)	34 – 241 barg (500 – 3,500 psig)	207 – 414 barg (3,000 – 6,000 psig)	390 – 655 barg (5,060 – 9,000 psig)
Supply Pressure Dependency	0.50%	2%	3%	4.50%
Seat (mm)	2mm (1/16")			
Cv	0.08			
Leakage (Seat)	Bubble Tight			
Temperature Range	-20°C to +70°C (-4 to + 158°F)			
Port Size	3/8"			
Port Types	ISO G Aluminium (AL), NPT Stainless Steel (SS)			
Materials (Body) Materials (Other)	SS & AL Nitrile / Peek (AL) Viton / Peek (SS)			
Weight	AL 2kg (4.5lbs) SS 4.5kg (10lbs)			

FLOW CHARACTERISTICS

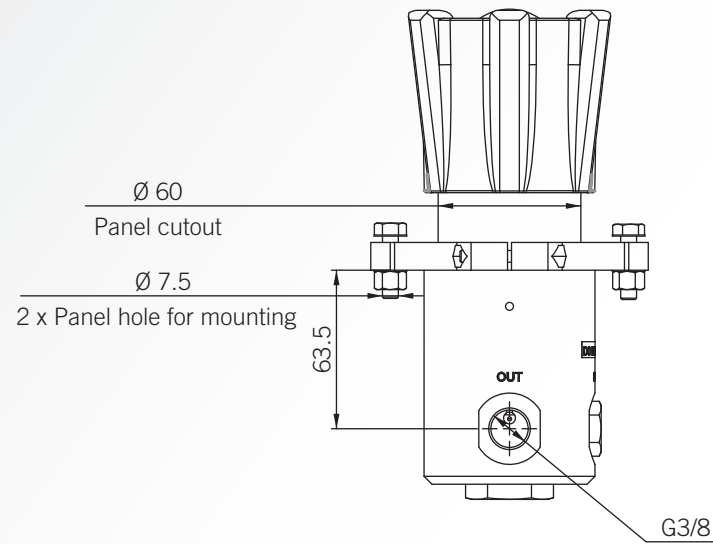
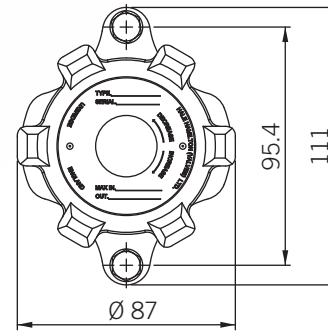
Typical characteristics of sample regulators. Detail design changes may affect these characteristics. The regulator is set to a desired outlet pressure at zero flow using the control knob. Flow is induced by opening a metering valve downstream and the change in outlet pressure is measured without adjusting the knob. This is repeated for various inlet pressures.



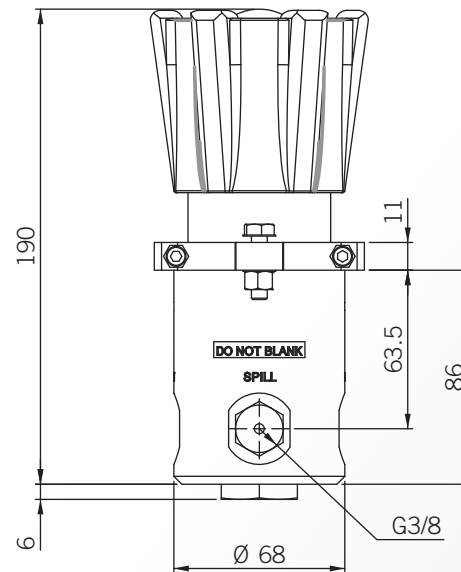
INLET PRESSURE KEY

- 400 bar
- 275 bar
- 140 bar
- 70 bar

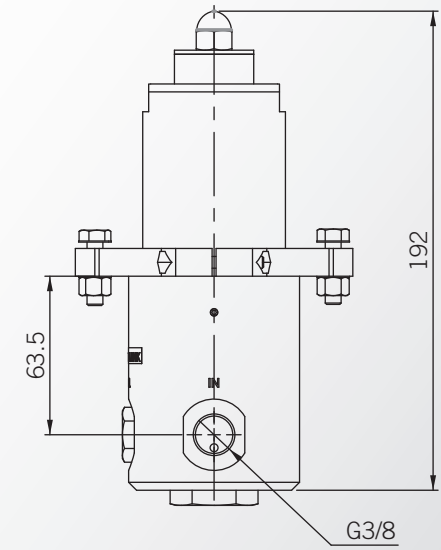
PRODUCT DIMENSIONS (IN MM)



HANDWHEEL



LOCKED VERSION



PRODUCT ORDERING CODES - GLD15, GLP15, GHP15, GXP15

ORDERING CODE	TYPE	OUTLET RANGE	MEDIUM	MATERIAL	CONTROL OPTION	PORT
NB28001-1	GLD15 MK1	1.5 – 58 barg (25 – 850 psig)	Gas	Aluminium	Handwheel	2
NB28007-1	GLD15 MK7	1.5 – 58 barg (25 – 850 psig)	Gas	Stainless Steel	Handwheel	2
NB28008-1	GLD15 MK8	1.5 – 58 barg (25 – 850 psig)	Gas	Stainless Steel	Handwheel	4
NB28027-1	GLD15 MK7	1.5 – 58 barg (25 – 850 psig)	Liquid	Stainless Steel	Handwheel	2
NB28002-1	GLD15 MK2	1.5 – 58 barg (25 – 850 psig)	Gas	Aluminium	Handwheel	2
NB28052-1	GLP15 MK2	34 – 241 barg (500 – 3,500 psig)	Gas	Aluminium	Handwheel	4
NB28052-2	GLP15 MK2	34 – 241 barg (500 – 3,500 psig)	Gas	Aluminium	Locked Out	4
NB28008-1	GLD15 MK8	1.5 – 58 barg (25 – 850 psig)	Gas	Stainless Steel	Handwheel	4
NB28008-2	GLD15 MK8	1.5 – 58 barg (25 – 850 psig)	Gas	Stainless Steel	Locked Out	4
NB28028-1	GLD15 MK8/HYD	1.5 – 58 barg (25 – 850 psig)	Liquid	Stainless Steel	Handwheel	4
NB28028-2	GLD15 MK8/HYD	1.5 – 58 barg (25 – 850 psig)	Liquid	Stainless Steel	Locked Out	4
NB28058-1	GLP15 MK8	34 – 241 barg (500 – 3,500 psig)	Gas	Stainless Steel	Handwheel	4
NB28058-2	GLP15 MK8	34 – 241 barg (500 – 3,500 psig)	Gas	Stainless Steel	Locked Out	4
NB28078-1	GLP15 MK8/HYD	34 – 241 barg (500 – 3,500 psig)	Liquid	Stainless Steel	Handwheel	4
NB28078-2	GLP15 MK8/HYD	34 – 241 barg (500 – 3,500 psig)	Liquid	Stainless Steel	Locked Out	4
NB28108-1	GHP15 MK8	207 – 414 barg (3,000 – 6,000 psig)	Gas	Stainless Steel	Handwheel	4
NB28108-2	GHP15 MK8	207 – 414 barg (3,000 – 6,000 psig)	Gas	Stainless Steel	Locked Out	4
NB28118-1	GHP15 MK8/HYD	207 – 414 barg (3,000 – 6,000 psig)	Liquid	Stainless Steel	Handwheel	4
NB28118-2	GHP15 MK8/HYD	207 – 414 barg (3,000 – 6,000 psig)	Liquid	Stainless Steel	Locked Out	4
NB28617-1	GXP15 MK8/HYD	390 – 655 barg (5,650 – 9,000 psig)	Liquid	Stainless Steel	Handwheel	2
NB28617-2	GXP15 MK8/HYD	390 – 655 barg (5,650 – 9,000 psig)	Liquid	Stainless Steel	Locked Out	2

PRODUCT ORDERING INFORMATION

When placing an enquiry please advise the following:

- > Inlet Pressure
- > Outlet Pressure
- > Flow Rate
- > Fluid Temperature
- > Media
- > Certification and QA Requirements
- > Locked Outlet
- > Limit Stop on Outlet