



SERIES ASV167

Slam Shut Valve (DN 25)



YOUR CREATIVE ENGINEERING PARTNER

SERIES ASV167 / ASV

Slam Shut Valve

Series ASV167 is a Slam Shut Valve for use in high pressure gas systems to provide over pressure protection based on pressure containment rather than relief.

The Valve is typically installed upstream of a pressure regulator and will sense the downstream pressure. Set pressure is via an in-built relief device, when the pressure exceeds the set limit the valve slams shut at high speed, preventing further over pressurisation.

The valve can be manually or remotely reset via system control and can be used in gas systems up to 330 barg (4350 psig).

HIGHLIGHTS

- > Conforms to Pressure Equipment Directive 97/23/EC (PED).
- > Automatic shut-off operation, Independent of electronic control systems.
- > Connections via adaptors with either industry standard threaded ports, brazed or weld stub connections.
- > Polymer seat provides tight shut off.
- > ATEX proximity sensors for Indication of valve position.
- > Actuation pressure from 3.5barg to 300barg.

IDEAL USES

- > Pressure Reduction Systems.
- > Flammable Gas Systems.
- > Trailer Decanting.



ASV167 / ASV169 – SLAM SHUT VALVE

Maximum
Working
Pressure:
330
barg
(4785 psig)

Actuation
Pressure:
3.5 - 120
barg
(50.75 - 4350 psig)

Features and Specifications

1. Actuating Valve

2. Vent Valve

3. Top Switch - Open

4. Bottom Switch - Closed

5. Instrumentation Ports



Product Specification Data

Series ASV167	
Maximum Working Pressure	330 barg (4785 psig)
Nominal Bore	25mm (1")
Port Adaptors	See Adaptor Options
Actuator Port	3/8" NPT Female
Temperature Range	-20°C to +70°C
Weight	22 kg (approx.)
Valve Body Material	Stainless Steel
Relief Valve Material	Brass
Port Adaptors Material	See Adaptor Data Sheet
Seat Material	PEEK
Seal Material	HMBR

Adaptor Options

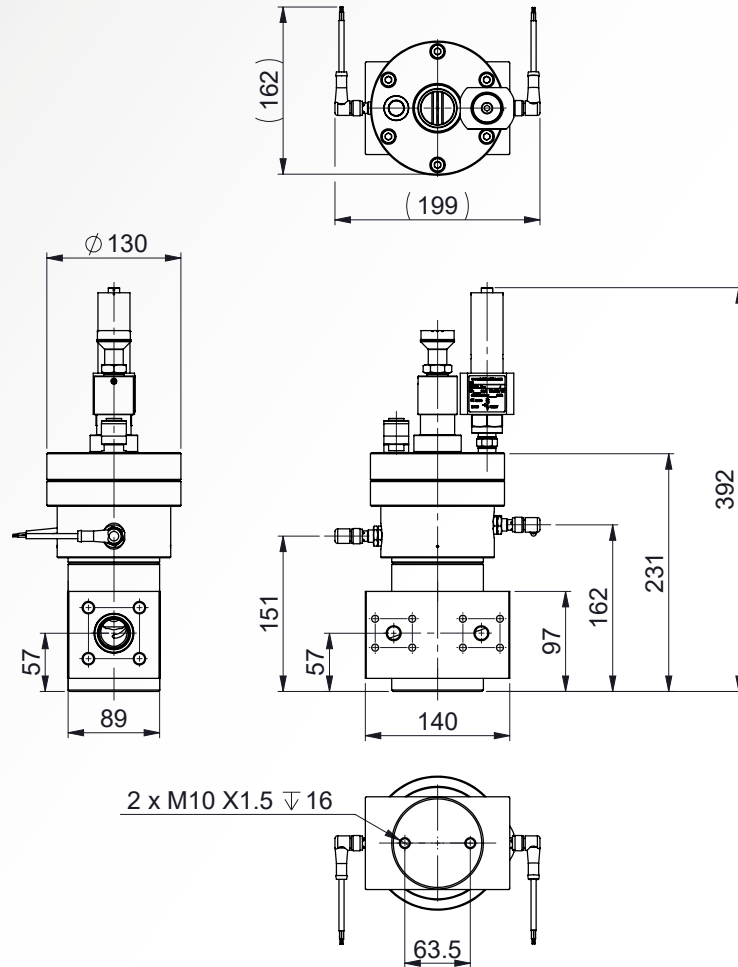
Series ASV167

- > The process ports use proprietary flanged adaptors which can be supplied with suitable detailing for welding or brazing to suitable pipe connections.
- > The instrumentation ports use proprietary flanged adaptors which are described on a separate data sheet.

For additional connection options, please contact sales@halehamilton.com

Ordering Information & Installation Dimensions

All Dimensions in mm.



Ordering Information

When placing an enquiry, please advise the following:

- > Inlet Pressure Range
- > Fluid Temperature Range
- > Ambient Temperature Range
- > Fluid Type
- > Connections Required (if threaded or flanges) or Pipes Sizes and Material (if welded connections required)
- > Application Details
- > Filter Required 'recommended' (yes/no)
- > Any Special Requirements (materials, etc)
- > Set Pressure