



# SERIES AN62

Actuated Stop Valve - DN15



**YOUR CREATIVE ENGINEERING PARTNER**

# SERIES AN62

## Actuated Stop Valve - DN15

Series AN62 is a pneumatically actuated, high-integrity stop valve used with inert, flammable and non-oxidising gases in high pressure applications where tight shut off is required.

Threaded, welded or brazed, bolted flange adaptors provide connection to the pipe or manifold system.

## HIGHLIGHTS

- > Proven in use in Hydrogen Mobility applications, across multiple platforms at settled pressures up to 500 barg at 15°C (maximum working pressure 600barg)
- > Conforms to Pressure Equipment Directive 97/23/EC (PED)
- > Connection to pipe via threaded ports or weld adaptors (via bolted flange, see installation information)
- > Normally closed or Normally Open Options
- > Optional ATEX proximity sensors for indication of valve position.

## IDEAL USES

- > H2 & CNG High Pressure Gas Trailers and storage modules
- > Automatic Isolation
- > Filling Stations
- > H2 Gas Control Panels
- > Automatically Cylinder Filling Systems
- > High Pressure Test Rigs
- > Pressure Reduction Skids.



**AN62 – ACTUATED STOP VALVE**

Maximum  
Working  
Pressure:  
**600**  
barg  
(8700 psig)

Flow  
Factor  
**Cv - 6.0**

# Features, Specifications & Ordering Information

## 1. Visual Indicator

Provides a visual indication of the valves position.

## 2. Fail Closed or Fail Actuator Types

The Series AN62's design ensures low operating stress and longer service life, proven in use.

## 3. Serviceability

All key elements of the Series AN62 are fully replacable, allowing for easy in-field servicing.

## 4. Flanged Interface

The flanged interface can be configured with either industry standard threaded adaptors or can be welded or brazed to the pipe.

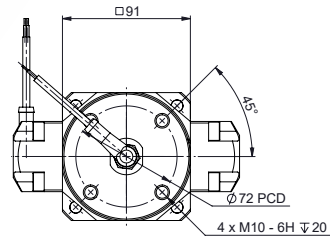
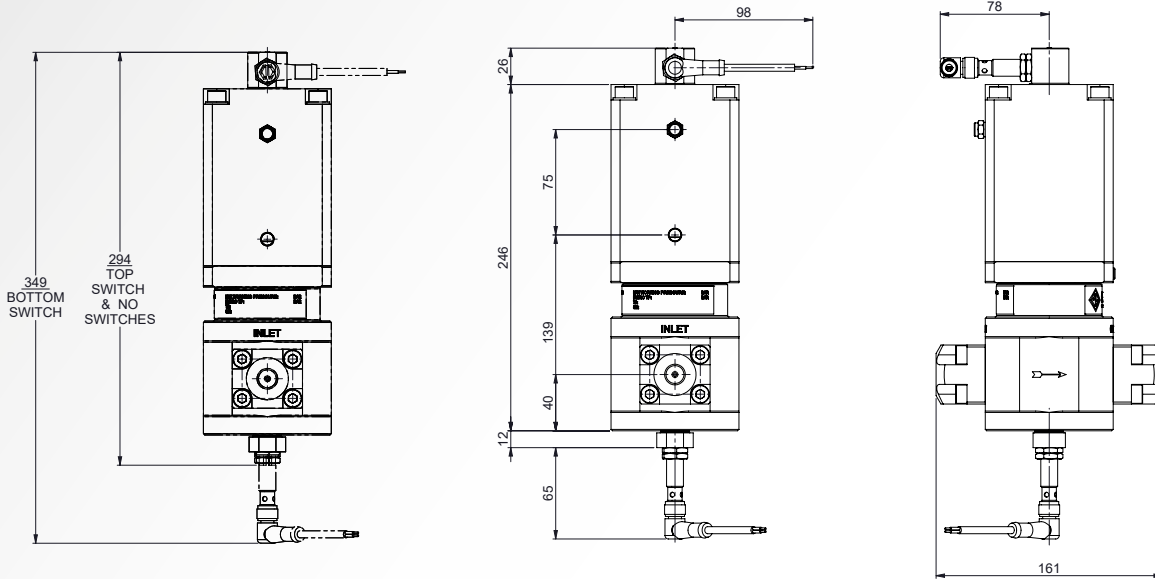


# Product Specification Data

Series AN62	
Function	Isolation
Media	Non-Oxidising Gases
Maximum Working Pressure	0-500/0-600 barg options
Actuation Pressure	7-10 barg (100-145 psig)
Nominal Bore (mm)	15
Flow Factor (Cv)	6.0
Leakage (Seat)	Bubble Tight
Temperature Range	-20°C to +70°C (-4°F to +158°F)
Material	316 Stainless Steel
Connection	1/2" NPT(F) as standard. For additional connection options such as; 3/4" NPT(F) or Weld Stub connections, see ordering code page or contact <b>'sales@halehamilton.com'</b>
Helium Leak Test	Helium leak testing available at additional costs. Please contact <b>sales@halehamilton.com</b> for additional information

# Installation Dimensions

All Dimensions in mm.



Dimensions	Weight
A AN62 DN 15 with Inlet Switch	8.7 kg

Dimensions	A	B	Weight
AN62 DN 15 with no switches	161	90	8.7 kg
AN62 DN 15 with Outlet switch	77	214	8.7 kg

Dimensions	A	B	C	D	E	F	G	H	I	J	Weight
A AN62 DN 15 with Inlet Switch - Normally Open	91	98	272	246	112	40	22	1/2" NPT	91	111	8.7 kg

Note: Will be the same for all